

Model GM & GMD

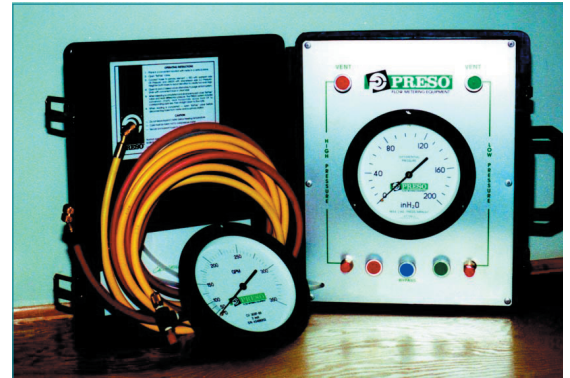
Differential Pressure Gages

PRESO gages measure differential pressure (DP) between two points. Flush panel mounting, pipe mounting, and surface mounting as well as portable kits are available for various field applications.

Flow rates are determined using the principle that the difference in pressure is proportional to the rate of flow in a pipe.

Both the lightweight GM portable kit and the GMD Direct-Readout Meter are suitable for DP measurement across venturis, pitot tubes, orifice plates, filters, heat exchangers,

Large dial features a 270° arc for fast and accurate reading. Precision engineered dust-tight case ensures trouble free operation.



*GM Portable Kit and
GMD Direct-Readout Meter*

- **Air - Gas - Liquids - Oil**
- **Direct Reading**
- **Lightweight and Portable**

Mfg. by Presso for Patterson Pt

MODEL SELECTOR: PGM□□□□

BODY MATERIAL

- A - BRASS
- B - STAINLESS STEEL
- X - OTHER

TYPE

- A - STD DIAPHRAGM
- B - DOUBLE BELLWS
- C - ALUMINUM (LOW DP GAS APPLICATIONS AND 4" DIAL ONLY)
- D - STD W/HIGH TEMP KIT
- X - OTHER

DIAL RANGE

- 1 - 0-10 IN. H₂O
- 2 - 0-20 IN. H₂O
- 3 - 0-30 IN. H₂O
- 4 - 0-60 IN. H₂O
- 5 - 0-100 IN. H₂O
- 6 - 0-150 IN. H₂O
- 7 - 0-200 IN. H₂O
- 8 - 0-300 IN. H₂O
- 9 - 0-400 IN. H₂O
- 0 - 0-500 IN. H₂O
- X - OTHER

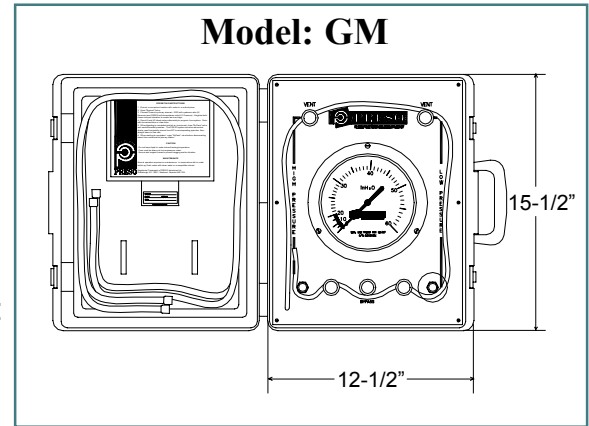
HOSE KIT

- 1 - 10' NYLON SAE
- 2 - 10' NYLON QUICK CONNECT
- 3 - 10' NYLON P & T PROBE
- 4 - 20' NYLON SAE
- 5 - 20' NYLON QUICK CONNECT
- 6 - 20' NYLON P & T PROBE
- 7 - 10' SS SAE
- 8 - 20' SS SAE
- X - OTHER
- Z - NOT REQUIRED

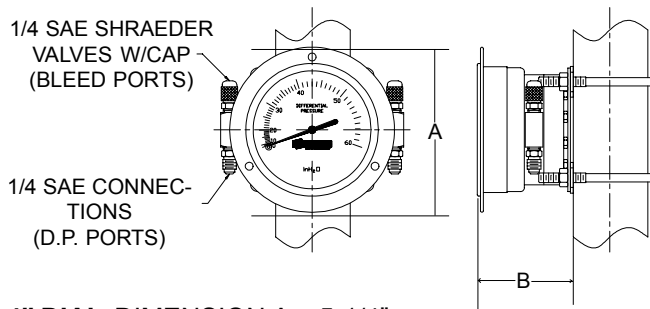
CONSTRUCTION AND SPECIFICATIONS

GM Portable Meter

Body:	Brass or Stainless Steel
Diaphragm:	Beryllium Copper or Stainless Steel
Seals:	Nitrile Rubber or Viton
Dial Face:	6" - 270° Arc
Dial Case:	Aluminum with ABS Bezel
Portable Case:	Shock Resistant Vinyl Lined
Calibration:	Portable Standard Ranges include: 0-30", 0-60", 0-100", 0-150", 0-250" H ₂ O others on application



Model: GMD



4" DIAL: DIMENSION A = 5-1/4"
DIMENSION B = 2-3/4"

6" DIAL: DIMENSION A = 7-1/4"
DIMENSION B = 3"

GMD Direct Read Meter

Body:	Brass or Stainless Steel
Diaphragm:	Beryllium Copper or Stainless Steel
Seals:	Nitrile Rubber or Viton
Dial Face:	6" - 270° Arc
Dial Case:	Aluminum with ABS Bezel
Portable Case:	Shock Resistant Vinyl Lined
Direct Read	Any Engineering Units: GPM, l/s, m ³ /hr., cfm, psid, etc.

Design Features

- Accuracy: + 1-3/4%
- Maximum Overpressure: 60 psi
- Maximum Line pressure: 500 psi
- Maximum Temperature: 180°F

PRESO gages are protected against overload by a unique diaphragm housing design. When the pressure difference exceeds the range, the gage will accept the accidental application up to 60 PSIG without damage. Under normal conditions the differential pressure should not exceed the range of the gage.

MODEL SELECTOR: PGMD□□□□□□□□

TYPE

- E - Standard
- B - Double Bellows
- D - Low DP (4in aluminum body only)

DIAL SIZE

- 1 - 4" (100 mm)
- 2 - 6" (150 mm)

BODY MATERIAL

- A - BRASS/BRONZE
- B - STAINLESS STEEL
- C - BRASS HI TEMP (320 F)
- D - SS HI TEMP (320 F)
- X - OTHER

FACE PLATE

- 1 - FLOW UNITS
- 2 - DUAL SCALE FLOW UNITS
- 3 - DIFFERENTIAL PRESSURE
- 4 - DP DUAL SCALE

INSTRUMENT CONNECTION

- 1 - 1/4" SAE
- 2 - 1/4" MALE CONNECTOR
- 3 - 1/8" MNPT
- 4 - 1/4" MNPT
- 5 - QUICK CONNECT
- X - OTHER

NOTE:

For Lower DP (0.5 -20.0) please consult Preso

MANIFOLD

- 1 - 1-VALVE BYPASS BRASS
- 2 - 1-VALVE BYPASS SS
- 3 - 3-VALVE BRASS
- 4 - 3-VALVE SS
- Z - NOT REQUIRED
- X - OTHER

DP RANGE (DETERMINED BY PRESO)

- A - 20
- B - 30
- C - 60
- D - 100
- E - 120
- F - 150
- G - 160
- H - 200
- I - 250
- J - 300
- K - 400
- L - 500
- M - 600
- X - OTHER

METERS AND GAGES

Direct Reading Meters

- Engineering Flow Units

PGMD □ □ □ □ □ □ □

DIAL SIZE

\$566.00	STANDARD	-	E
CF	DOUBLE BELLOWS	-	B

DIAL SIZE

STD	4" (100 mm)	-	1
CF	6" (150 mm)	-	2

BODY MATERIAL

STD	BRASS/BRONZE	-	A
CF	STAINLESS STEEL	-	B
CF	BRASS HI TEMP (320 F)	-	C
CF	SS HI TEMP (320 F)	-	D
CF	OTHER	-	X

FACE PLATE

STD	FLOW UNITS	-	1
CF	DIFFERENTIAL PRESSURE	-	2
CF	DUAL SCALE	-	3

INSTRUMENT CONNECTION

STD	1/4" SAE	-	1
CF	1/4" MALE CONNECTOR	-	2
CF	1/8" MNPT	-	3
CF	1/4" MNPT	-	4
CF	QUICK CONNECT	-	5
CF	OTHER	-	X

*** BY-PASS MANIFOLD**

ADD \$82.00	1-VALVE BYPASS BRASS	-	1
CF	3-VALVE BRASS	-	2
CF	3-VALVE SS	-	3
CF	NOT REQUIRED	-	Z
CF	OTHER	-	X

DP RANGE

IN of H2O

STD	20	-	A
STD	30	-	B
STD	60	-	C
STD	100	-	D
STD	120	-	E
STD	150	-	F
STD	160	-	G
STD	200	-	H
STD	250	-	I
STD	300	-	J
STD	400	-	K
STD	500	-	L
STD	600	-	M
POA	OTHER	-	X

Select the closest range that suits max flow, up to 10% over.

Example:

100 GPM = 173 in/H2O select **G**

*** By-Pass Manifold provides additional protection from over-pressurization**

Note: Weight = 8 lbs

CF=Consult Factory

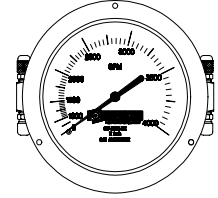


METERS & GAGES

METERS AND GAGES

Direct Reading Meters

- *Engineering Flow Units*
- *Low DP*



PGMDD□□□□□□□□

DIAL SIZE

STD 4" (100 mm) - E

BODY MATERIAL

\$566.00 BRASS/BRONZE - A
 CF ALUMINUM - B
 CF OTHER - X

FACE PLATE

STD FLOW UNITS - 1
 CF DIFFERENTIAL PRESSURE - 2
 CF DUAL SCALE - 3

INSTRUMENT CONNECTION

STD 1/4" SAE - 1
 CF 1/4" MALE CONNECTOR - 2
 CF 1/8" MNPT - 3
 CF 1/4" MNPT - 4
 CF QUICK CONNECT - 5
 CF OTHER - X

MOUNTING

STD PANEL - 1
 STD 2" PIPE - 2

*** BY-PASS MANIFOLD**

ADD \$82.00 1-VALVE BYPASS BRASS - 1
 CF 3-VALVE BRASS - 2
 CF 3-VALVE SS - 3
 CF NOT REQUIRED - Z
 CF OTHER - X

STATIC PRESSURE (FLUID)

CF 15 PSIG (AIR/NON CORROSIVE GAS) - A
 CF 35 PSIG (AIR/NON CORROSIVE GAS) - B
 CF 80 PSIG (AIR/NON CORROSIVE GAS) - C
 CF 500 PSIG (AIR/NON CORROSIVE GAS) - D
 CF 500 PSIG (WATER/NON CORROSIVE LIQUID) - E

DP RANGE IN of H2O

STD 0.5 - A
 STD 1.0 - B
 STD 2.0 - C
 STD 3.0 - D
 STD 4.0 - E
 STD 5.0 - F
 STD 6.0 - G
 STD 8.0 - H
 STD 10.0 - I
 STD 15.0 - J
 STD 20.0 - K
 POA OTHER - X

Select the closest range that up to max flow.

* **By-Pass Manifold provides additional protection from over-pressurization**

Note: Weight = 8 lbs

CF=Consult Factory